



PL-S

6PL-S/COR/13H-5CCT/MF6/P/2P 20/1

Philips LED PL-S lamps make the transition to LED from CFL lamps as simple as replacing a lamp. The InstantFit (UL Type A) 2-pin PL-S LED lamps are available in a wide array of color temperatures. They quickly and effectively replace 13W 2-pin compact fluorescent PL-S lamps.

Product data

General Information	
Cap-Base	GX23
Nominal lifetime	50,000 hour(s)
Switching Cycle	50,000
Lighting Technology	LED

Light Technical	
Color Code	2700/3000/3500/4000/5000
Beam Angle (Nom)	140 degree(s)
Luminous Flux	620 620 620 650 650 lm
Color Designation	2700/3000/3500/4000/5000
Correlated Color Temperature (Nom)	2700 3000 3500 4000 5000 K
Luminous Efficacy (rated) (Nom)	108 lm/W
Color Consistency	<6
Color rendering index (CRI)	82
LLMF At End Of Nominal Lifetime (Nom)	70 %

Operating and Electrical	
Input Frequency	50 to 60 Hz
Power Consumption	6 W
Lamp Current (Max)	55 mA
Lamp Current (Min)	27 mA
Wattage Equivalent	13 W

Starting Time (Nom)	0.5 s
Warm-up time to 60% light	0.5 s
Power Factor (Fraction)	0.9
Voltage (Nom)	120-277 V
UL Type	UL Type B

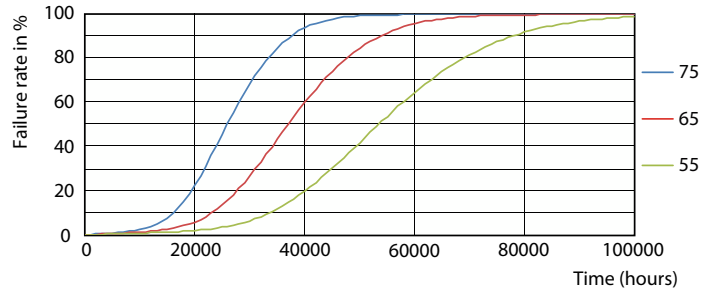
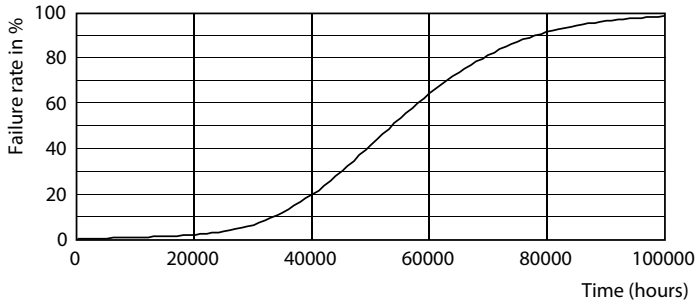
Temperature	
T-Case Maximum (Nom)	131 °F

Controls and Dimming	
Dimmable	No

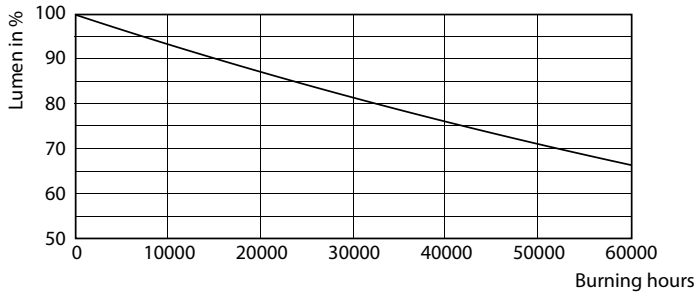
Mechanical and Housing	
Bulb Finish	Frosted
Bulb Material	Plastic
Product Length	6-5/16 inch
Bulb Shape	PL-S
Net Weight (Piece)	0.104 lb

Approval and Application	
Energy Saving Product	Yes
Approval Marks	RoHS compliance UL certificate
EU RoHS compliant	Yes

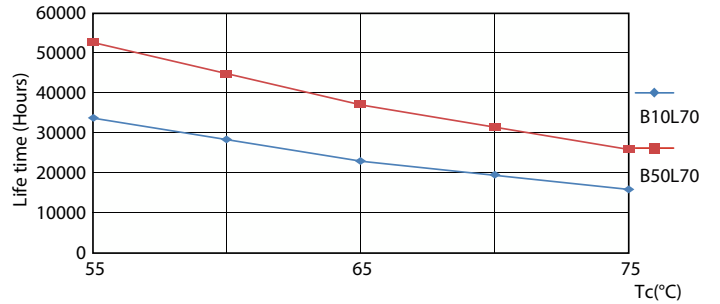
Lifetime



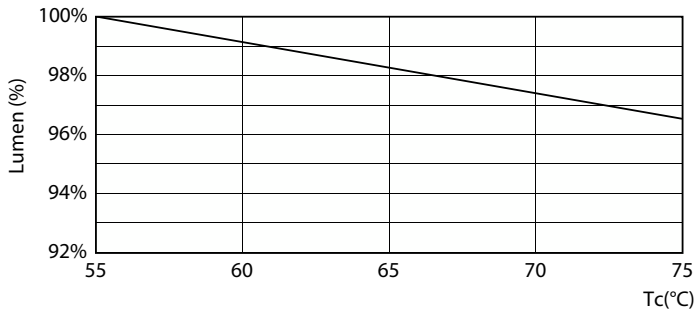
Life Expectancy Diagram



FailureRate



Lumen Maintenance Diagram - 6PL-S/COR/13H-5CCT/MF6/P/2P 20/1



LifetimeVsTc

Lumen Maintenance Diagram - 6PL-S/COR/13H-5CCT/MF6/P/2P 20/1

