

# CorePro MainsFit (UL Type-B) T8

7T8/COR/18-5CCT/MF9/G 25/1

CorePro, LED, T8, 7 W, 3000 K, 3500 K, 4000 K, 5000 K, 6500 K, 900 lm, 50000 hour(s)

The CorePro MainsFit (UL Type B) lamps are designed to be the perfect retrofit solution to move from traditional fluorescent lamps to energy saving LEDs. This ballast bypass lamp has everything needed built into the lamp with proven energy savings, long life (up to 50k hours), surge suppression and industry leading safety features. All lamps in the CorePro MainsFit family are double-ended to help simplify the installation. In addition, all lamps meet the Philips standards for light quality so that end users will be in a comfortable environment regardless of the CorePro MainsFit lamp type.

## Product data

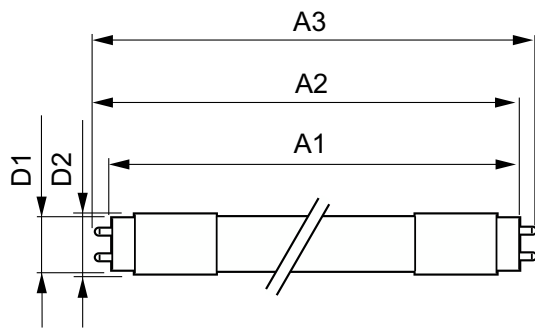
General Information		Color Consistency	
Cap-Base	G13	Color rendering index (CRI)	80
Nominal lifetime	50,000 hour(s)	LLMF At End Of Nominal Lifetime (Nom)	70 %
Switching Cycle	50,000	Operating and Electrical	
Lighting Technology	LED	Input Frequency	50 to 60 Hz
Light Technical		Power Consumption	7 W
Color Code	3000K/3500K/4000K/5000K/6500K	Lamp Current (Max)	60 mA
Beam Angle (Nom)	220 degree(s)	Lamp Current (Min)	28 mA
Luminous Flux	900 lm	Wattage Equivalent	15 W
Color Designation	3000K/3500K/4000K/5000K/6500K	Starting Time (Nom)	0.5 s
Correlated Color Temperature (Nom)	3000 3500 4000 5000 6500 K	Warm-up time to 60% light	0.5 s
Luminous Efficacy (rated) (Nom)	128 lm/W	Power Factor (Fraction)	0.9

# CorePro MainsFit (UL Type-B) T8

Voltage (Nom)	120-277 V
UL Type	UL Type B
<b>Temperature</b>	
T-Case Maximum (Nom)	140 °F
<b>Controls and Dimming</b>	
Dimmable	No
<b>Mechanical and Housing</b>	
Bulb Finish	Frosted
Bulb Material	Glass
Product Length	19-11/16 inch
Bulb Shape	T8
Net Weight (Piece)	0.198 lb
<b>Approval and Application</b>	
Energy Saving Product	Yes

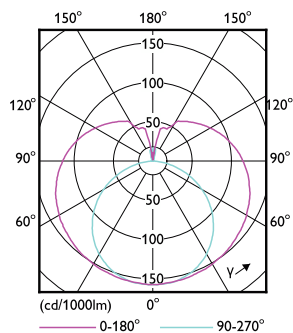
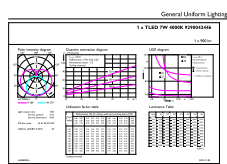
Approval Marks	RoHS compliance UL certificate
EU RoHS compliant	Yes
Ambient temperature range	-4 to +113 °F
<b>Application Conditions</b>	
can it be used in closed luminaires	Yes
<b>Product Data</b>	
Order product name	7T8/COR/18-5CCT/MF9/G 25/1
Full product name	7T8/COR/18-5CCT/MF9/G 25/1
Order code	592758
Material Nr. (12NC)	929004244604
Numerator - Quantity Per Pack	1
EAN/UPC - Product/Case	046677592752
Numerator - Packs per outer box	25
EAN/UPC - Case	50046677592757

## Dimensional drawing



Product	D1	D2	A1	A2	A3
7T8/COR/18-5CCT/MF9/G 25/1	1-1/16 inch	1-1/8 inch	17-3/16 inch	17-1/2 inch	17-3/4 inch

## Photometric data

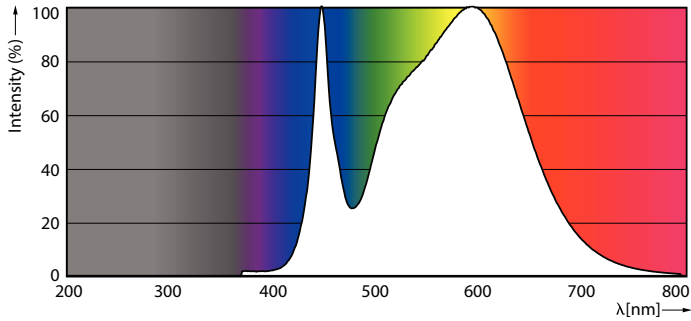


General uniform lighting - 7T8/COR/18-5CCT/MF9/G 25/1

Light Distribution Diagram - 7T8/COR/18-5CCT/MF9/G 25/1

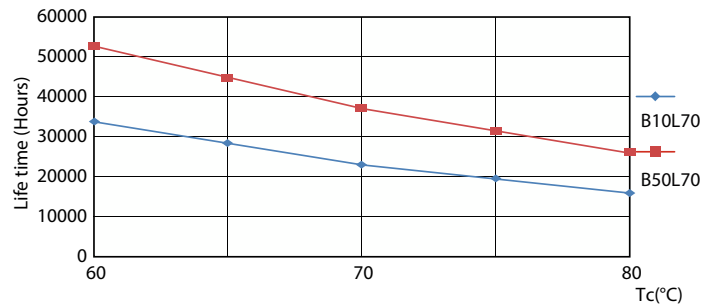
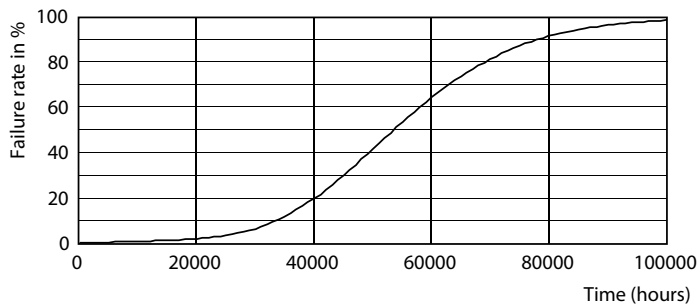
# CorePro MainsFit (UL Type-B) T8

## Photometric data



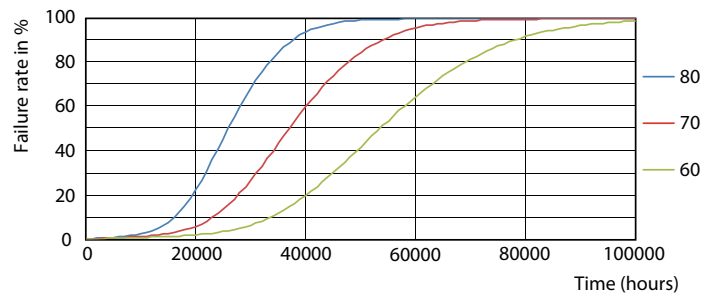
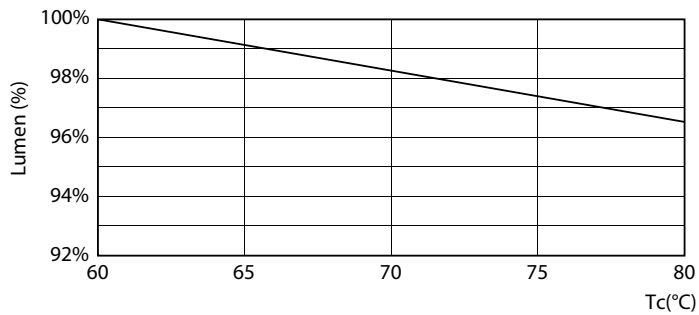
Spectral Power Distribution Colour - 7T8/COR/18-5CCT/MF9/G 25/1

## Lifetime



Life Expectancy Diagram

LifetimeVsTc

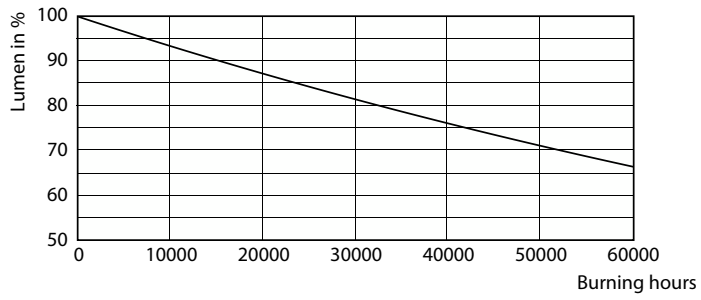


Lumen Maintenance Diagram - 7T8/COR/18-5CCT/MF9/G 25/1

FailureRate

# CorePro MainsFit (UL Type-B) T8

## Lifetime



Lumen Maintenance Diagram - 7T8/COR/18-5CCT/MF9/G 25/1

