



MasterClass LEDtube InstantFit T8

7T8/MAS/24-835/IF10/P 10/1

Product data

General Information		Power Factor (Nom)	
Cap-Base	G13 [Medium Bi-Pin Fluorescent]		0.9
Nominal Lifetime (Nom)	70000 h	Voltage (Nom)	120-277, 347 V
Switching Cycle	50000X	Temperature	
B50L70	70000 h	T-Ambient (Max)	45 °C
Light Technical		T-Ambient (Min)	-20 °C
Color Code	835 [CCT of 3500K]	T-Storage (Max)	65 °C
Beam Angle (Nom)	180 °	T-Storage (Min)	-40 °C
Initial lumen (Nom)	1100 lm	T-Case Maximum (Nom)	50 °C
Luminous Flux (Rated) (Nom)	1100 lm	Controls and Dimming	
Rated Beam Angle	180 °	Dimmable	No
Correlated Color Temperature (Nom)	3500 K	Mechanical and Housing	
Color Consistency	<6	Product Length	600 mm
Color Rendering Index (Nom)	80	Approval and Application	
LLMF At End Of Nominal Lifetime (Nom)	70 %	Energy Saving Product	Yes
Operating and Electrical		Approbation Marks	RoHS compliance UL certificate DLC compliance
Input Frequency	20K to 120K Hz	DesignLights Consortium Qualified Product List	DesignLights Consortium Qualified Product List
Power (Rated) (Nom)	7 W		
Lamp Current (Max)	240 mA		
Lamp Current (Min)	80 mA		
Starting Time (Nom)	0.5 s		
Warm Up Time to 60% Light (Nom)	0.5 s		

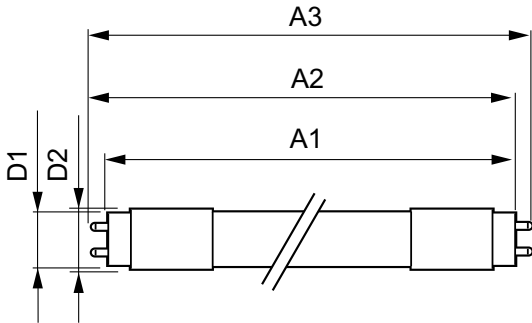
MasterClass LEDtube InstantFit T8

Product Data

Order product name	7T8/MAS/24-835/IF10/P 10/1
EAN/UPC - Product	046677541828
Order code	541821
Numerator - Quantity Per Pack	1
Numerator - Packs per outer box	10

Material Nr. (12NC)	929001987004
Net Weight (Piece)	0.080 kg
Model Number	9290019870

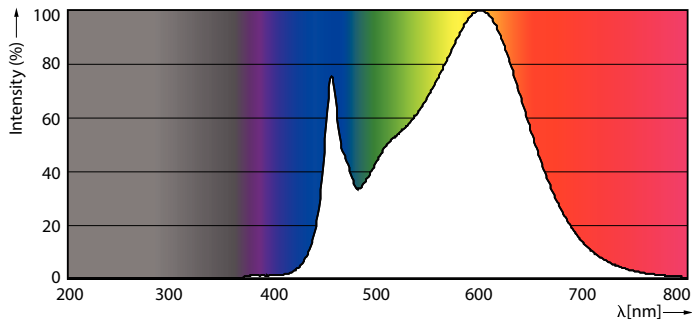
Dimensional drawing



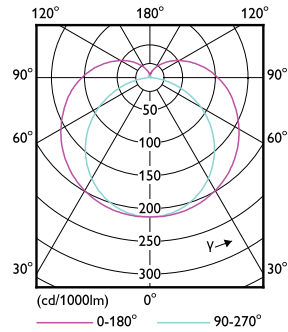
TLED 600mm 120-277V 7-17W 1050lm 3500K

Product	D1	D2	A1	A2	A3
7T8/MAS/24-835/IF10/P 10/1	25.7 mm	26.3 mm	588.6 mm	595.7 mm	602.8 mm

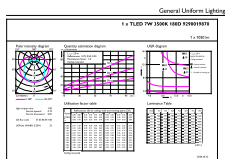
Photometric data



G13 3500K 1100lm



G13 3000K

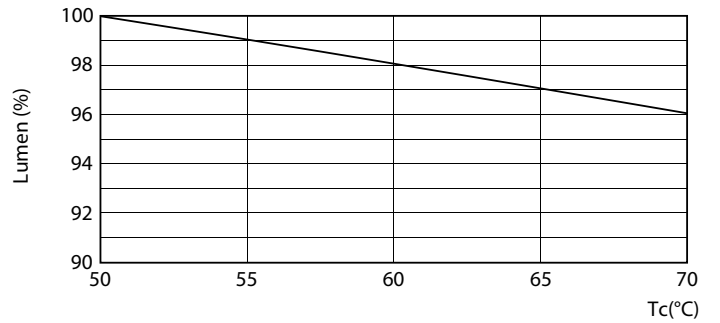
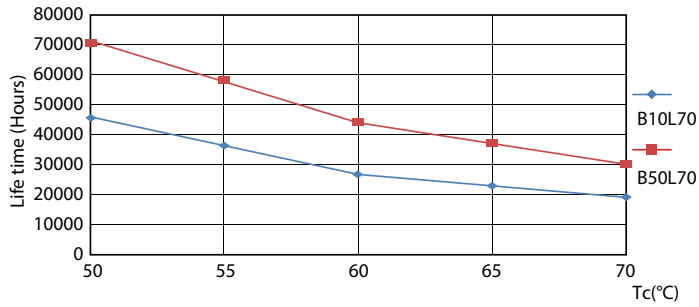


General Uniform Lighting

G13 3500K 1100lm

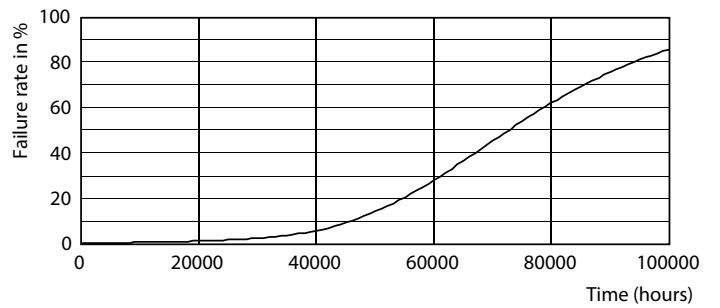
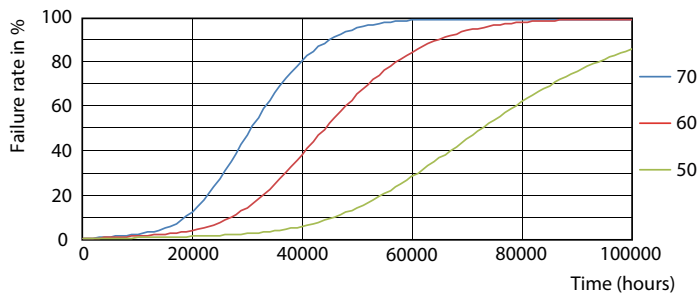
MasterClass LEDtube InstantFit T8

Lifetime



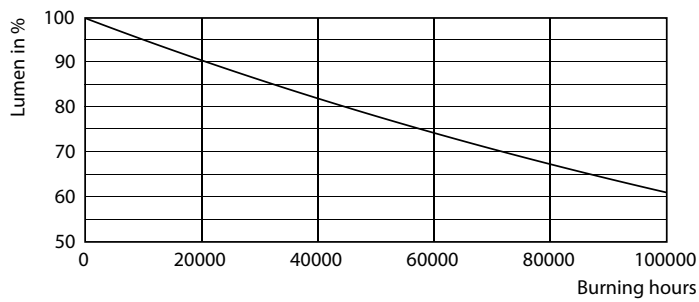
G13 3000K

G13 3000K 1100lm



G13 3000K

G13 3000K



G13 3000K

MasterClass LEDtube InstantFit T8

