

MasterClass LEDtube InstantFit T8

7T8/MAS/24-850/IF11/P 10/1

The Masterclass LED Type A - Ballast Driven (Plug and Play) InstantFit TLED is a great LED solution suitable for replacing T8 fluorescent lamps, using an existing ballast. Specific lamps can also be used on Philips Xitanium driver for Type C applications.

Product data

General Information	
Cap-Base	G13 [Medium Bi-Pin Fluorescent]
Nominal Lifetime (Nom)	70000 h
Switching Cycle	50000X
B50L70	70000 h

Light Technical	
Color Code	850 [CCT of 5000K]
Beam Angle (Nom)	180 °
Luminous Flux (Nom)	1150 lm
Luminous Flux (Rated) (Nom)	1150 lm
Rated Beam Angle	180 °
Correlated Color Temperature (Nom)	5000 K
Color Consistency	<5
Color Rendering Index (Nom)	80
LLMF At End Of Nominal Lifetime (Nom)	70 %

Operating and Electrical	
Input Frequency	20K to 120K Hz
Power (Rated) (Nom)	7 W

Lamp Current (Max)	240 mA
Lamp Current (Min)	80 mA
Starting Time (Nom)	0.5 s
Warm Up Time to 60% Light (Nom)	0.5 s
Power Factor (Nom)	0.9
Voltage (Nom)	120-277, 347 V

Temperature	
T-Ambient (Max)	45 °C
T-Ambient (Min)	-20 °C
T-Storage (Max)	65 °C
T-Storage (Min)	-40 °C
T-Case Maximum (Nom)	50 °C

Controls and Dimming	
Dimmable	No

Mechanical and Housing	
Product Length	600 mm

MasterClass LEDtube InstantFit T8

Approval and Application

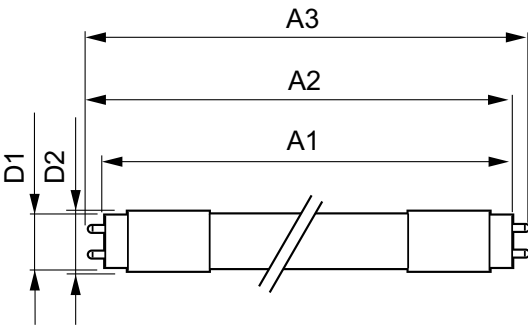
Energy Saving Product	Yes
Approval Marks	RoHS compliance UL certificate DLC compliance
DesignLights Consortium Qualified Product List	DesignLights Consortium Qualified Product List

Product Data

Order product name	7T8/MAS/24-850/IF11/P 10/1
--------------------	----------------------------

EAN/UPC - Product	046677541842
Order code	929001987204
Numerator - Quantity Per Pack	1
Numerator - Packs per outer box	10
Material Nr. (12NC)	929001987204
Net Weight (Piece)	0.080 kg

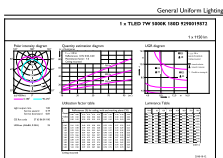
Dimensional drawing



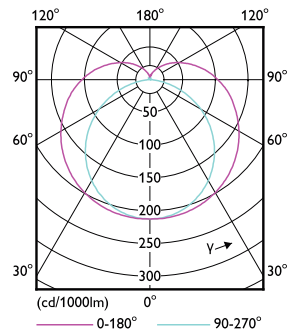
TLED IF MasterClass 2ft 1100lm 5000K

Product	D1	D2	A1	A2	A3
7T8/MAS/24-850/IF11/P 10/1	25.7 mm	26.3 mm	588.6 mm	595.7 mm	602.8 mm

Photometric data



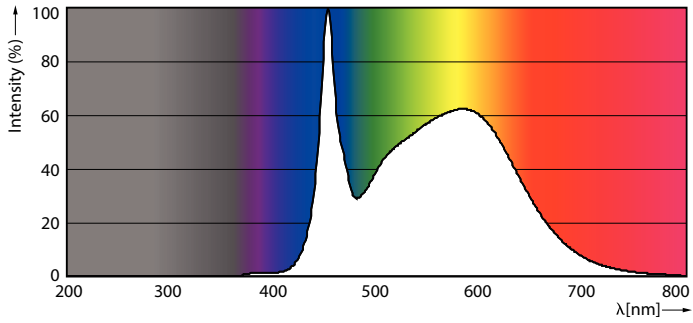
G13 5000K 1150lm



G13 3000K

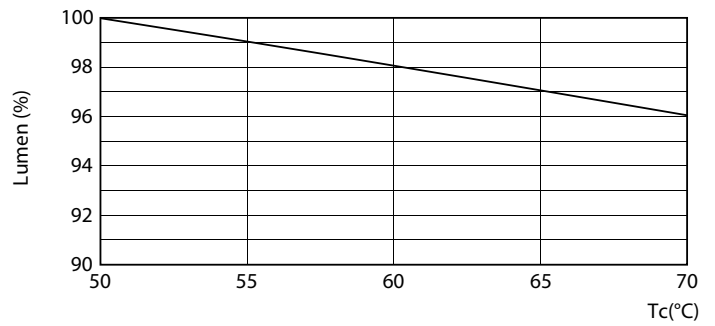
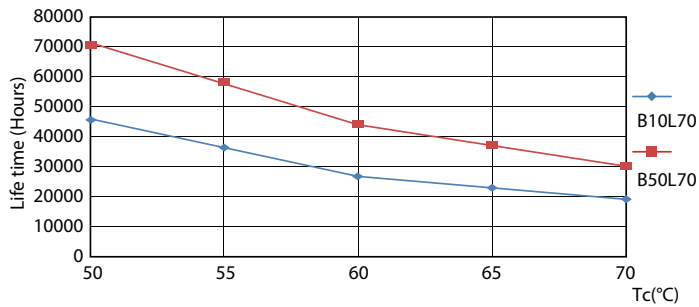
MasterClass LEDtube InstantFit T8

Photometric data



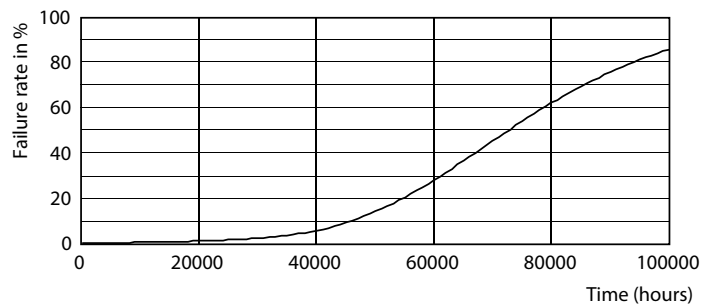
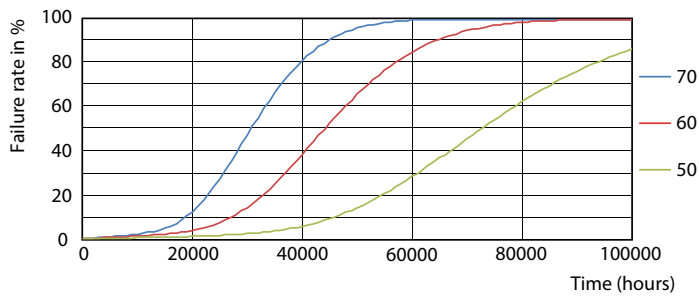
G13 5000K 1150lm

Lifetime



G13 3000K

G13 3000K 1100lm

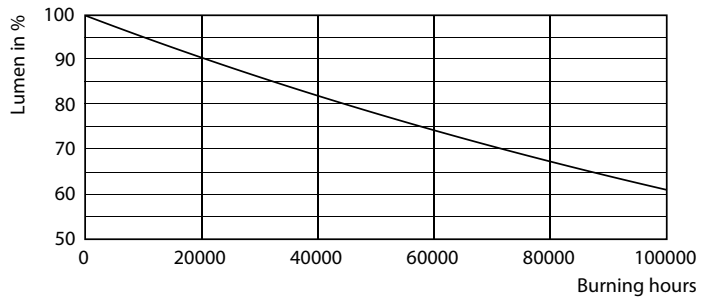


G13 3000K

G13 3000K

MasterClass LEDtube InstantFit T8

Lifetime



G13 3000K

