



T8

7T8/MAS/24-850/IF11/P/DIM 10/1

Our TLEDs are available in InstantFit (Type A / Type C) or MainsFit (Ballast bypass / Type B) versions. The InstantFit lamps work on a broad variety of ballasts and LED drivers. Only InstantFit has over 15,000 lamp & ballast combinations delivering even light output, energy savings and a long lifetime. Our MainsFit products feature a double-ended design, simplifying installation while a proprietary safety circuit minimizes a shock risk. Lamp sizes range from 2-foot to 8-foot and U-bend with a variety of lumen outputs.

Product data

General information		Lamp Current (Max)	
Base	G13 [Medium Bi-Pin Fluorescent]	Lamp Current (Max)	240 mA
EU RoHS compliant	Yes	Lamp Current (Min)	80 mA
Nominal Lifetime (Nom)	70000 h	Wattage Equivalent	17 W
Switching Cycle	50000	Starting Time (Nom)	0.5 s
		Warm Up Time to 60% Light (Nom)	0.5 s
		UL Type	Type A - works on ballast
		Power Factor (Nom)	0.9
		Voltage (Nom)	120-277, 347 V
Light technical		Temperature	
Color Code	850 [CCT of 5000K]	T-Ambient (Max)	113 °F
Beam Angle (Nom)	180 °	T-Ambient (Min)	-4 °F
Initial lumen (Nom)	1200 lm	T-Storage (Max)	149 °F
Color Designation	Daylight	T-Storage (Min)	-40 °F
Correlated Color Temperature (Nom)	5000 K	T-Case Maximum (Nom)	122 °F
Luminous Efficacy (rated) (Nom)	164.00 lm/W		
Color Consistency	<5	Controls and dimming	
Color Rendering Index (Nom)	80	Dimmable	Yes
LLMF At End Of Nominal Lifetime (Nom)	70 %		
Operating and electrical			
Input Frequency	20K to 120K Hz		
Power (Rated) (Nom)	7 W		

T8

Mechanical and housing

Bulb Finish	Frosted
Bulb Material	Plastic
Product Length	24 in
Bulb Shape	Tube, double-ended

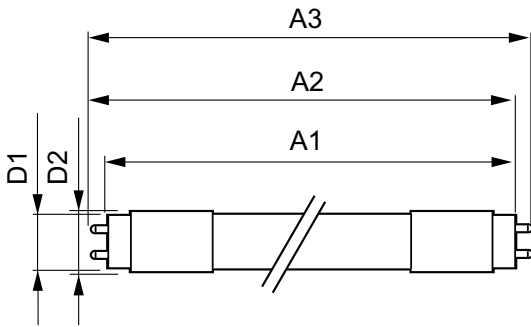
Approval and application

Energy Saving Product	Yes
Approbation Marks	RoHS compliance UL certificate DLC compliance
Energy Consumption kWh/1000 h	- kWh
Energy Certifications	DLC Standard

Product data

Order product name	7T8/MAS/24-850/IF11/P/DIM 10/1
EAN/UPC - Product	046677541842
Order code	541847
Numerator - Quantity Per Pack	1
Numerator - Packs per outer box	10
Material Nr. (12NC)	929001987204
Net Weight (Piece)	0.176 lb
Model Number	9290019872

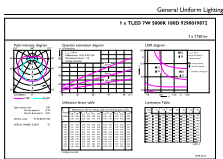
Dimensional drawing



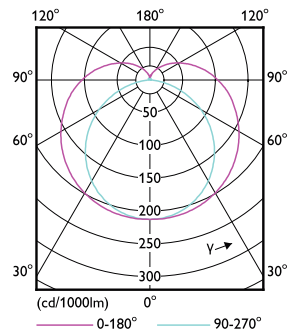
7T8/MAS/24-850/IF11/P/DIM 10/1

Product	D1	D2	A1	A2	A3
7T8/MAS/24-850/ IF11/P/DIM 10/1	1-1/16 in	1-1/16 in	23-3/16 in	23-1/2 in	23-3/4 in

Photometric data

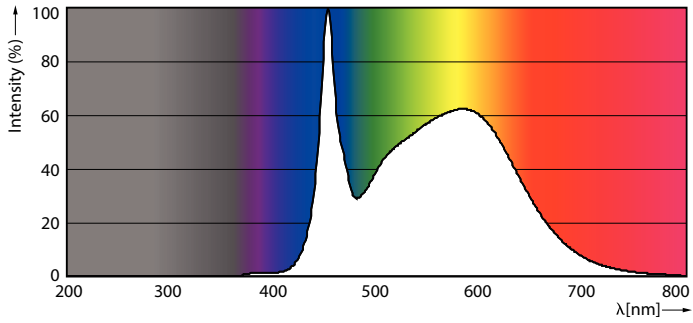


G13 5000K 1150lm



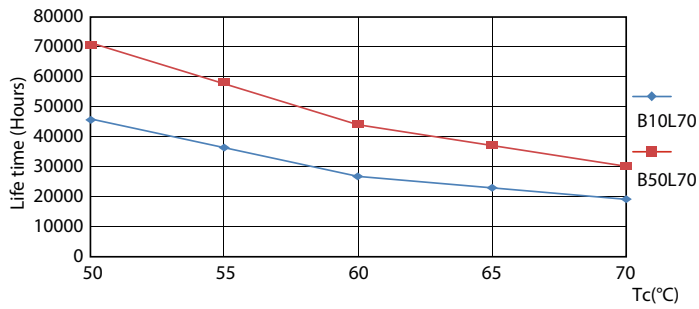
G13 4000K

Photometric data

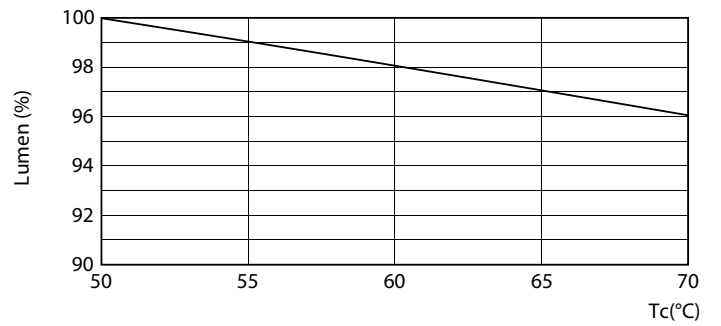


G13 5000K 1150lm

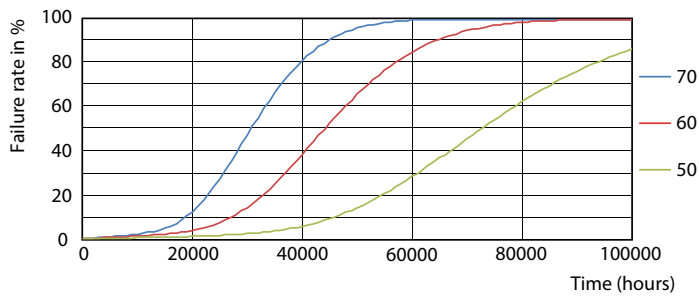
Lifetime



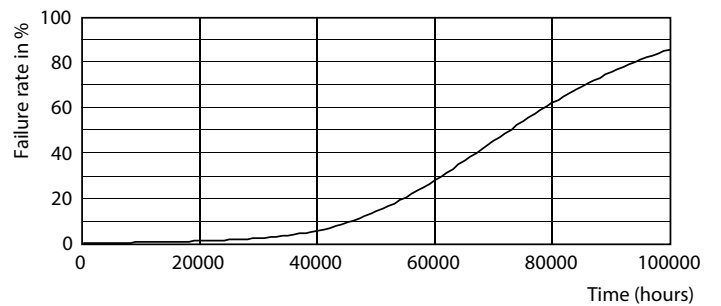
G13 4000K



G13 4000K



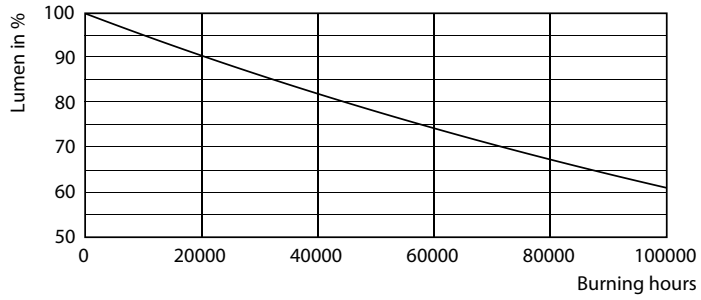
G13 4000K



G13 4000K

T8

Lifetime



G13 4000K

