



T8

8.5T8/COR/24-840/MF11/G 10/1

Our TLEDs are available in InstantFit (Type A / Type C) or MainsFit (Ballast bypass / Type B) versions. The InstantFit lamps work on a broad variety of ballasts and LED drivers. Only InstantFit has over 15,000 lamp & ballast combinations delivering even light output, energy savings and a long lifetime. Our MainsFit products feature a double-ended design, simplifying installation while a proprietary safety circuit minimizes a shock risk. Lamp sizes range from 2-foot to 8-foot and U-bend with a variety of lumen outputs.

Product data

General Information		Lamp Current (Max)		Lamp Current (Min)		Starting Time (Nom)		Warm Up Time to 60% Light (Nom)		UL Type		Power Factor (Nom)		Voltage (Nom)	
Base	G13 [Medium Bi-Pin Fluorescent]		75 mA		36 mA		0.9 s		0.9 s		Type B - bypass the ballast		0.9		120-277 V
EU RoHS compliant	Yes														
Nominal Lifetime (Nom)	50000 h														
Switching Cycle	50000X														
Light Technical		Temperature		Temperature		Temperature		Temperature		Temperature		Temperature		Temperature	
Color Code	841 [CCT of 4100K (841)]	T-Ambient (Max)	45 °C	T-Ambient (Min)	-20 °C	T-Storage (Max)	65 °C	T-Storage (Min)	-40 °C	T-Case Maximum (Nom)	50 °C				
Beam Angle (Nom)	180 °														
Initial lumen (Nom)	1150 lm														
Color Designation	Cool White (CW)														
Correlated Color Temperature (Nom)	4000 K														
Luminous Efficacy (rated) (Nom)	135.00 lm/W														
Color Consistency	<6														
Color Rendering Index (Nom)	82														
LLMF At End Of Nominal Lifetime (Nom)	70 %														
Operating and Electrical		Controls and Dimming		Controls and Dimming		Controls and Dimming		Controls and Dimming		Controls and Dimming		Controls and Dimming		Controls and Dimming	
Input Frequency	50 to 60 Hz	Dimmable	No												
Power (Rated) (Nom)	8.5 W														

T8

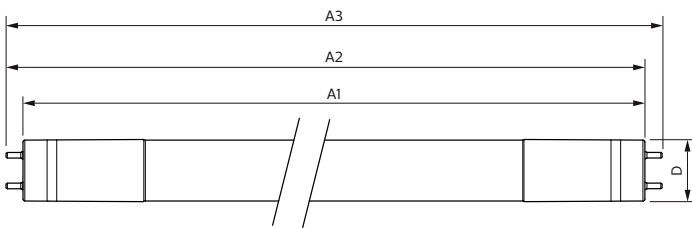
Mechanical and Housing

Product Length	24 in
Approval and Application	
Energy Efficiency Label (EEL)	Not applicable
Energy Saving Product	Yes
Approbation Marks	UL certificate RoHS compliance DLC compliance
Energy Consumption kWh/1000 h	- kWh
Energy Certifications	DLC Standard

Product Data

Order product name	8.5T8/COR/24-840/MF11/G 10/1
EAN/UPC - Product	046677535476
Order code	535476
Numerator - Quantity Per Pack	1
Numerator - Packs per outer box	10
Material Nr. (12NC)	929001934004
Net Weight (Piece)	0.200 kg
Model Number	9290019340

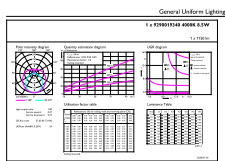
Dimensional drawing



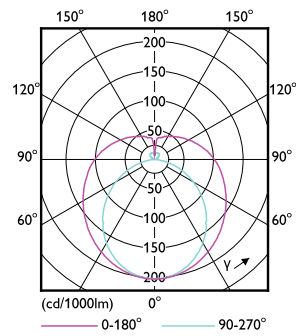
Product	D	A1	A2	A3
8.5T8/COR/24-840/MF11/G 10/1	25.9 mm	589.5 mm	595.7 mm	604 mm

TLED MF CorePro 2ft 1100lm 4000K

Photometric data



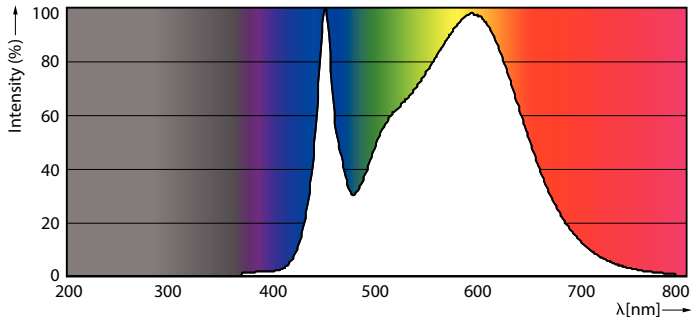
General Uniform Lighting
1 x TLED MF CorePro 2ft 1100lm 4000K



8.5W G13

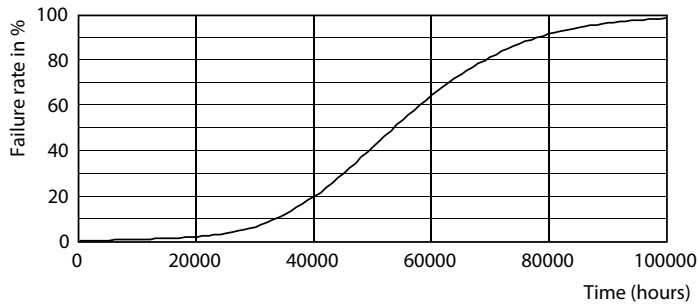
8.5W G13 840

Photometric data

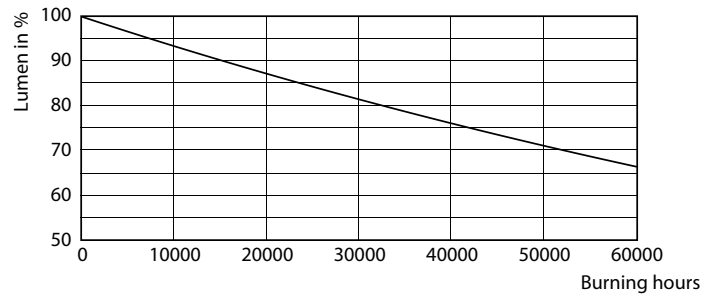


8.5W G13

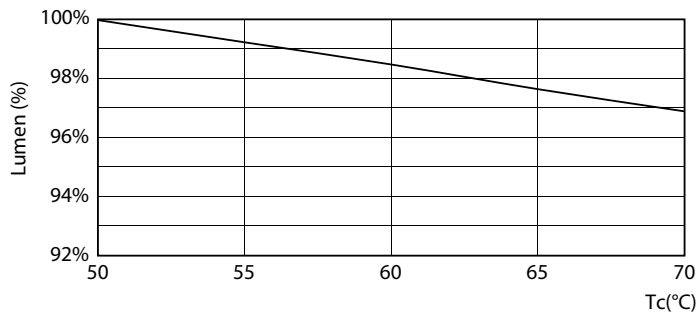
Lifetime



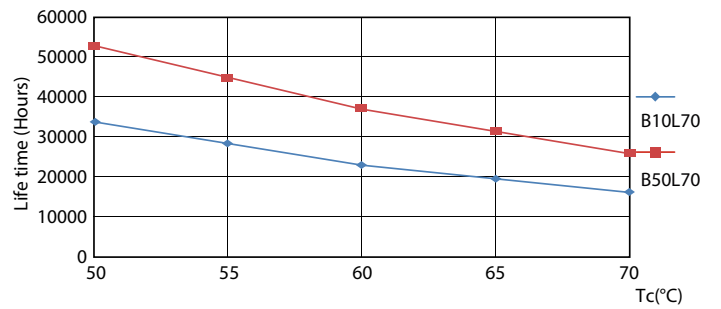
8.5W G13



8.5W G13



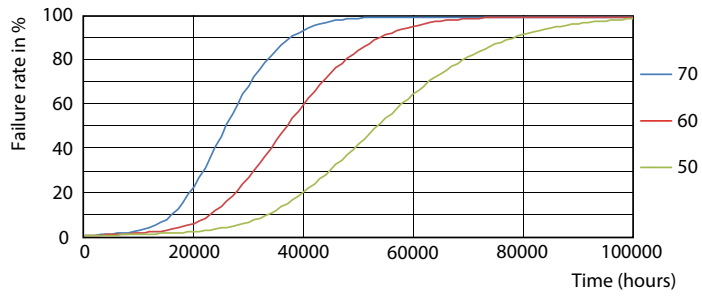
8.5W G13



8.5W G13

T8

Lifetime



8.5W G13

