



# PL-C/T

## 8PL-C/T/COR/26H-3CCT/MF10/P/20/1

Philips PLED 4-pin & 2-pin lamps are an affordable LED solution to replace compact fluorescent lamps. The product provides a natural lighting effect for use in many lighting applications, and provides instant energy savings, making them an environmentally-friendly solution. Available as replacements for 13W, 26W and 32W compact fluorescent lamps.

### Product data

General information	
Base	G24Q [ G24q]
EU RoHS compliant	Yes
Nominal Lifetime (Nom)	30000 h
Switching Cycle	50000
Technical Type	LEDTECH-LOV
Light technical	
Color Code	3000/3500/4000
Beam Angle (Nom)	120 °
Initial lumen (Nom)	975/1000/1050 lm
Color Designation	3000/3500/4000
Correlated Color Temperature (Nom)	3000 3500 4000 K
Luminous Efficacy (rated) (Nom)	131.00 lm/W
Color Consistency	<6
Color Rendering Index (Nom)	83
LLMF At End Of Nominal Lifetime (Nom)	70 %
Operating and electrical	
Input Frequency	50 to 60 Hz
Power (Rated) (Nom)	8 W
Lamp Current (Max)	75 mA

Lamp Current (Min)	30 mA
Starting Time (Nom)	0.5 s
Warm Up Time to 60% Light (Nom)	0.5 s
UL Type	Yes
Power Factor (Nom)	0.9
Voltage (Nom)	120-277 V

Temperature	
T-Ambient (Max)	113 °F
T-Ambient (Min)	-4 °F
T-Storage (Max)	149 °F
T-Storage (Min)	-40 °F
T-Case Maximum (Nom)	149 °F

Controls and dimming	
Dimmable	No

Mechanical and housing	
Bulb Finish	Frosted
Bulb Material	Plastic
Product Length	8 in

# PL-C/T

Bulb Shape	Tube, single-ended
------------	--------------------

## Approval and application

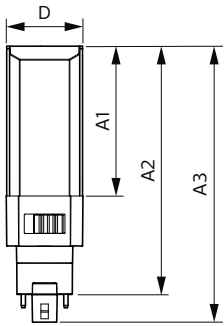
Energy Saving Product	Yes
Approbation Marks	RoHS compliance UL certificate

## Product data

Order product name	8PL-C/T/COR/26H-3CCT/MF10/P/20/1
EAN/UPC - Product	046677577896

Order code	577890
Numerator - Quantity Per Pack	1
Numerator - Packs per outer box	20
Material Nr. (12NC)	929003477604
Net Weight (Piece)	0.209 lb
Model Number	9290034776

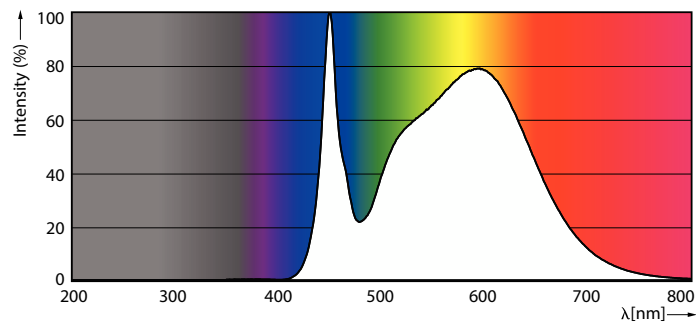
## Dimensional drawing



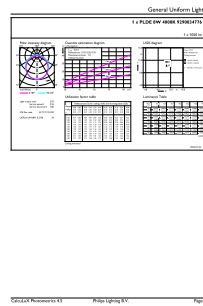
8PL-C/T/COR/26H-3CCT/MF10/P/20/1

Product	D	D2	A1	A2	A3
8PL-C/T/COR/26H-3CCT/MF10/P/20/1	1-11/16 in		3-1/4 in	5-5/16 in	5-15/16 in

## Photometric data

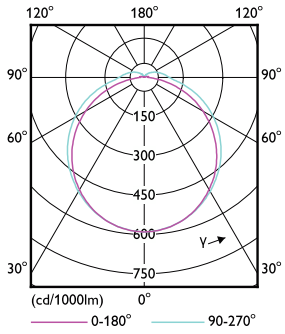


Spectral Power Distribution Colour



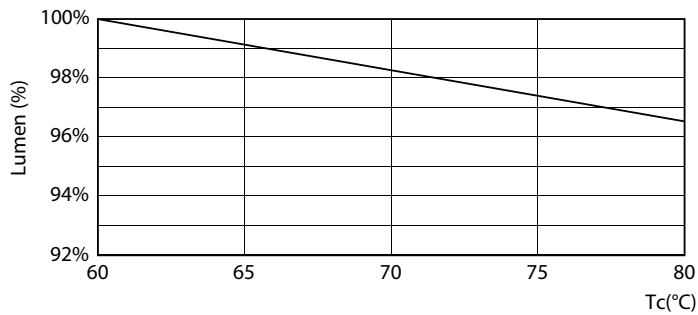
General uniform lighting

Photometric data

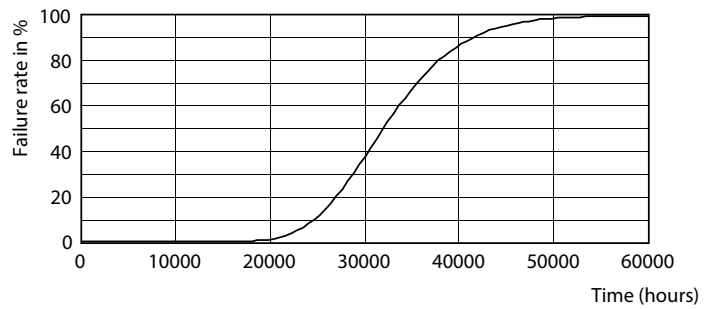


Light Distribution Diagram

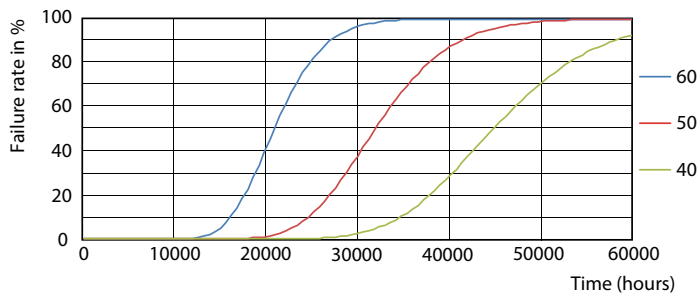
Lifetime



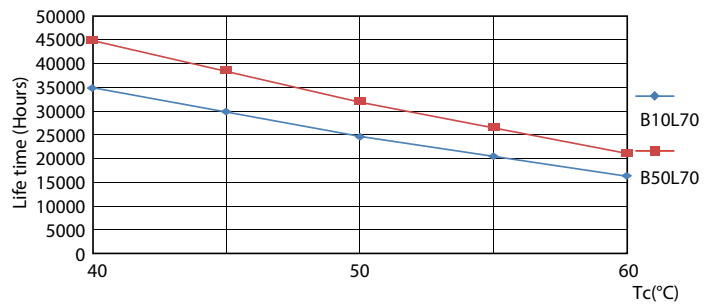
LEDtube\_PLCT\_8W\_30K\_LumenVsTc-LMP



Life Expectancy Diagram

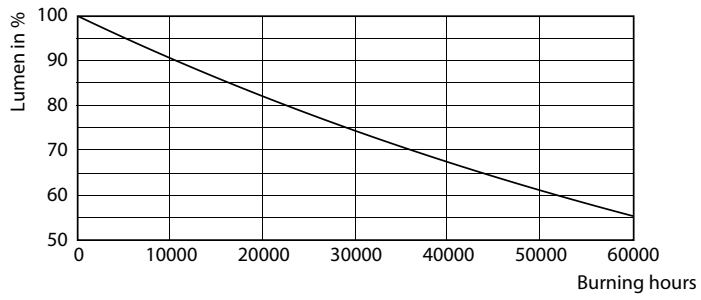


FailureRate



LifetimeVsTc

Lifetime



Lumen Maintenance Diagram

