

# T5

## 8T5HE/22-830/IF10/G/DIM 10/1

Philips T5 LED tubes offer an affordable, energy saving retrofit solution. The T5 lamps have been engineered to withstand the test of time with a 50,000-hour lifetime and a limited 5-year warranty to back it up. The lighting performance effectively replaces conventional fluorescent T5 HO or T5 HE lamps. Available in either InstantFit (Type A or Type C) or MainsFit (Type B / Ballast bypass), Philips T5 TLEDs provide a variety of options for any application.

### Product data

General information		Lamp Current (Max)	
Cap-Base	G5 [ G5]	Lamp Current (Min)	400 mA
EU RoHS compliant	Yes	Wattage Equivalent	60 mA
Nominal Lifetime (Nom)	50000 h	Starting Time (Nom)	14 W
Switching Cycle	50000	Warm Up Time to 60% Light (Nom)	0.5 s
Tier	CorePro	UL Type	0.5 s
Light technical		Power Factor (Nom)	Type A - works on ballast
Color Code	830 [ CCT of 3000K]	Voltage (Nom)	0.9
Beam Angle (Nom)	200 °	Temperature	
Luminous Flux (Nom)	1000 lm	T-Ambient (Max)	45 °C
Color Designation	White (WH)	T-Ambient (Min)	-20 °C
Correlated Color Temperature (Nom)	3000 K	T-Storage (Range)	-40 °C to 65 °C
Luminous Efficacy (rated) (Nom)	125.00 lm/W	T-Storage (Max)	65 °C
Color Consistency	<6	T-Storage (Min)	-40 °C
Color Rendering Index (Nom)	82	T-Case Maximum (Nom)	70 °C
LLMF At End Of Nominal Lifetime (Nom)	70 %	Controls and dimming	
Operating and electrical		Dimmable	Yes
Input Frequency	40000-110000 Hz		
Power (Nom)	8 W		

# T5

## Mechanical and housing

Bulb Finish	Frosted
Bulb Material	Glass
Product Length	600 mm
Bulb Shape	Tube, double-ended

## Approval and application

Energy Saving Product	Yes
Approval Marks	UL certificate RoHS compliance
Energy Consumption kWh/1000 h	- kWh

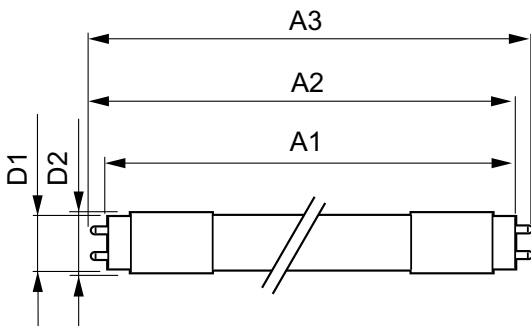
## Application conditions

Ambient temperature range	-20 °C to 45 °C
---------------------------	-----------------

## Product data

Order product name	8T5HE/22-830/IF10/G/DIM 10/1
EAN/UPC - Product	046677476410
Order code	929001823104
Numerator - Quantity Per Pack	1
Numerator - Packs per outer box	10
Material Nr. (12NC)	929001823104
Net Weight (Piece)	0.080 kg

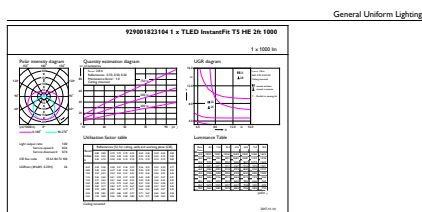
## Dimensional drawing



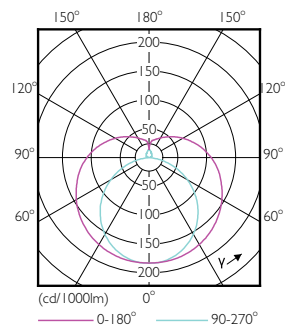
8T5HE/22-830/IF10/G/DIM 10/1

Product	D1	D2	A1	A2	A3
8T5HE/22-830/IF10/G/DIM 10/1	15.3 mm	18.4 mm	547.8 mm	554.9 mm	562 mm

## Photometric data

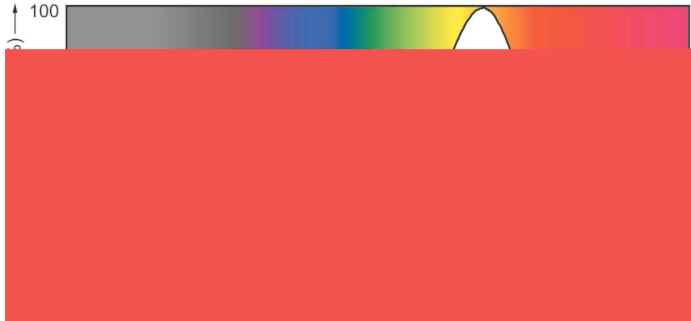


LEDtube 8W G5 830 200D DIM IF10

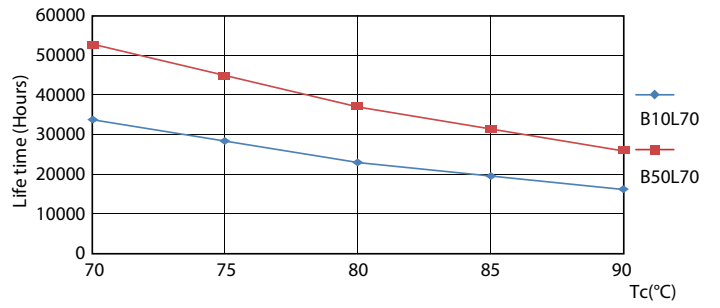
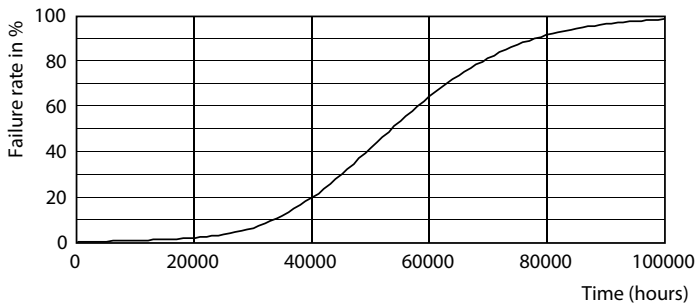


LEDtube 8W G5 830 200D DIM IF10

Photometric data

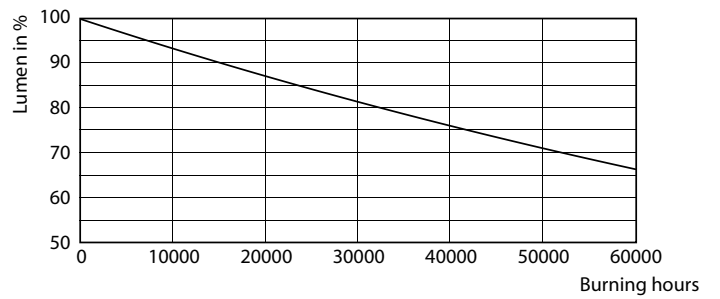
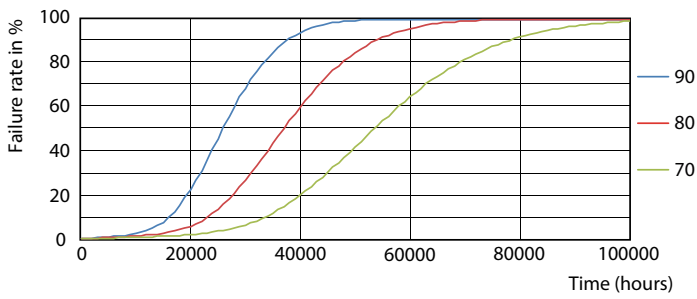


Lifetime



LEDtube 8-14W G5 830-850 200D DIM IF10-21

LEDtube 8-14W G5 830-850 200D DIM IF10-21

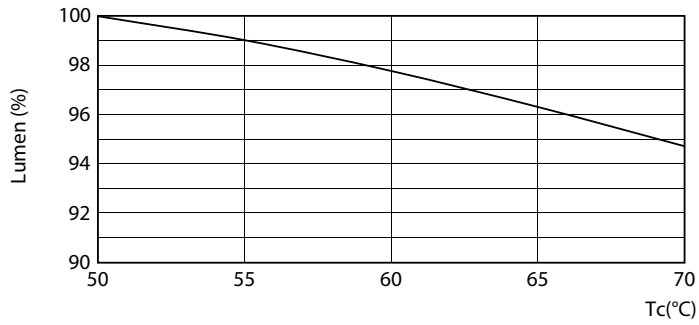


LEDtube 8-14W G5 830-850 200D DIM IF10-21

LEDtube 8-14W G5 830-850 200D DIM IF10-21

# T5

## Lifetime



LEDtube 8-14W G5 830-850 200D DIM IF10-21

