



# KTLM-360-SQ1-8XX-35B

## SQUARE SERIES LED MODULE

### DESCRIPTION

2" Square LED Module

RoHS  
Compliant

5 YEAR  
WARRANTY

<b>MODULE TYPE:</b> Square
<b>MAX. MODULE POWER:</b> 7.13W
<b>MAX. DRIVE CURRENT:</b> 360mA
<b>COLOR RENDERING INDEX (CRI):</b> >80
<b>WARRANTY:</b> 5 Years

### PRODUCT FEATURES

- For use in Class 2 lighting systems
- Highly reflective white soldermask
- UL Recognized components
- Thermally conductive metal core PCB
- 4-step MacAdam color binning
- LM80 tested LEDs
- Beam angle: 120°
- Reported life expectancy: L70 > 36,000 hours at Tc < 85°C

### PRODUCT SPECIFICATIONS

KTLM-360-SQ1-8XX-35B						
CCT (K)	CRI	Test (mA)	Volts	Watts	Flux	Efficacy
2700	>80	300	19.5	5.85	796	136.1
		360	19.8	7.13	946	132.8
		-	-	-	-	-
3000		300	19.5	5.85	828	141.5
		360	19.8	7.13	984	138.0
		-	-	-	-	-
4000		300	19.5	5.85	875	149.6
		360	19.8	7.13	1040	145.9
		-	-	-	-	-
5000	300	19.5	5.85	886	151.5	
	360	19.8	7.13	1054	147.8	
	-	-	-	-	-	

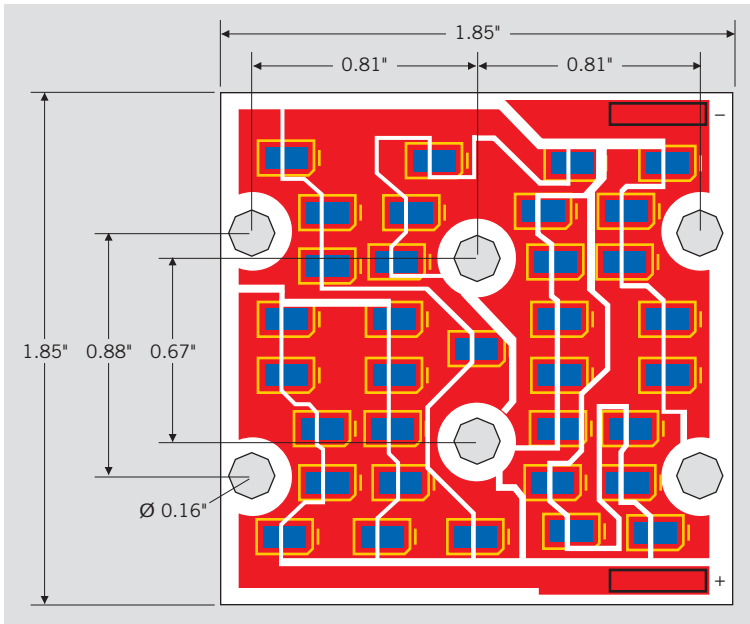


# KTLM-360-SQ1-8XX-35B

## SQUARE SERIES LED MODULE

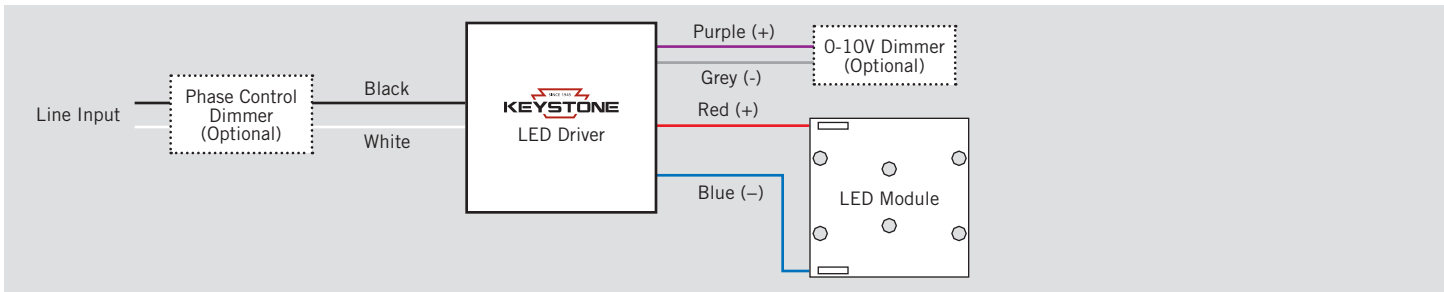
### PHYSICAL CHARACTERISTICS

#### LED MODULE DIMENSIONS



Note: LED's shown for reference only. For specific LED placement dimensions, please contact Keystone Technologies.

### WIRING DIAGRAM



### ORDERING INFORMATION

ORDER CODE	PACKAGING STYLE	PACK QTY.	ITEM STATUS
KTLM-360-SQ1-8XX-35B-CP	Carton Pack	TBD	Active

### CATALOG NUMBER BREAKDOWN

# KTLM-360-SQ1-8XX-35B-CP

1
2
3
4
5
6
7
8

- |  |  |
|--|--|
| <p><b>1</b> Keystone Technologies LED Module</p> <p><b>2</b> Drive Current (mA)</p> <p><b>3</b> Form Factor Designation</p> <p><b>4</b> 800 Series</p> | <p><b>5</b> Color Temperature</p> <p><b>6</b> Number of LEDs</p> <p><b>7</b> 120° Beam Angle</p> <p><b>8</b> Packaging Style</p> |
|--|--|